

Lesser Slave River

Upcoming Council Meetings

WEDNESDAYS, MAY 13 AND 27, AT 10:00AM

MD's First Annual Spring Sweep Community Sale

The MD's new annual Spring Sweep is a region-wide event happening **JUNE 5-7**, where residents and local businesses across the MD can host garage sales, acreage sales, and special deals—all in one big weekend.

We're kicking off a brand-new spring tradition across the MD—and you're invited! Participants can register their location to be featured on an official online map, making it easy for shoppers to plan their route and explore sales across the region.

Whether you're clearing out the garage, cleaning up the shop, or offering a special promotion at your business, this is a great way to welcome the season, declutter, and connect with your community. This event is organized by the Slave Lake & District Chamber of Commerce in partnership with the MD. Learn more at mdlsr.ca/news.

Temporary Office in Smith

Once again this year, the MD will operate a temporary remote office every Wednesday at the Smith Community Complex to better serve area residents. The office will be open Wednesdays only, from **MAY 6 TO JUNE 24**, between 8:30am and 3:00pm.

MD administrators will be on-site each week to assist with property tax payments and answer questions. We're pleased to continue offering this annual service and look forward to connecting with area residents throughout the period.

Property Assessment Information

If you have questions or concerns about the assessed value of your property, please contact the MD's Taxation team toll-free at **1.866.449.4888**. Administration will forward your information to Accurate Assessment, the MD's contracted assessor, and an assessor will follow up with you directly to review your file and discuss any concerns in detail.

Assessment Concern Open House

To provide additional support, our assessors will also be available at an **Assessment Concern Open House** at the MD administration office in Slave Lake on **JUNE 10**, from 12:00pm to 6:00pm. Residents are encouraged to stop by with their questions or concerns; staff will be happy to help clarify your assessment and explain the process.

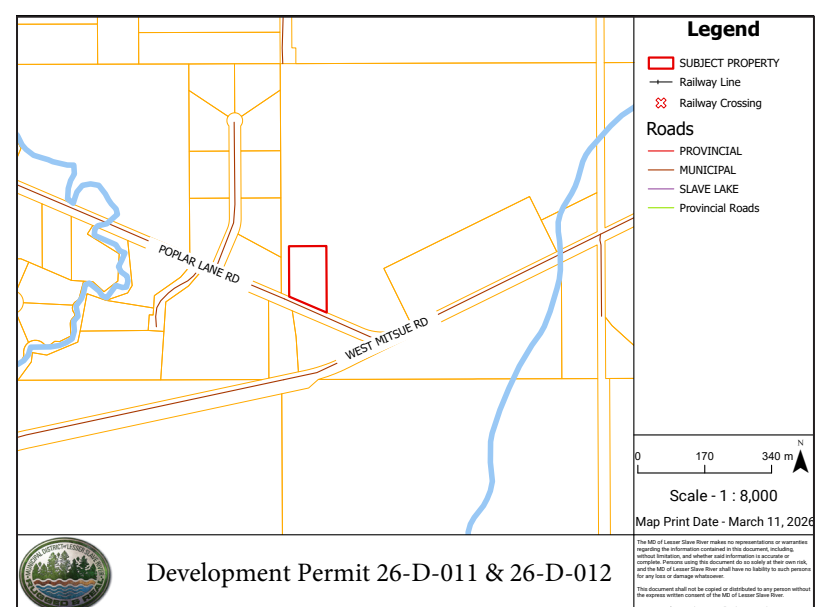
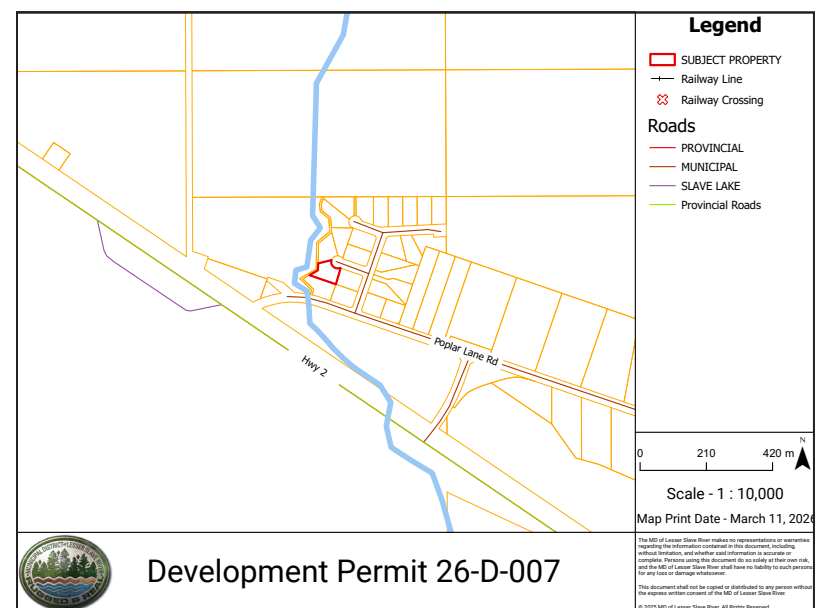
MD of Lesser Slave River Notice of Decision(s)

The following discretionary use Development Permit Application(s) have been approved by the Development Authority. Appeals must be received no later than 4:30pm on **MAY 13, 2026**.

	DISCRETIONARY USE
26-D-007	DISCRETIONARY USE - SECONDARY SUITE: BASEMENT SUITE (EXISTING) - APPROVED 0220804; 2; 4 (9 ALDER KEY) COMMUNITY: POPLAR LANE
26-D-011	DISCRETIONARY USE - HOME OCCUPATION (GENERAL CONTRACTOR SERVICES) - UP TO THREE (3) EMPLOYEES ON-SITE - APPROVED 0020605; 1 (52038 POPLAR LANE) COMMUNITY: POPLAR LANE
26-D-012	DISCRETIONARY USE - DWELLING, HOUSE - APPROVED 0020605; 1 (52038 POPLAR LANE) COMMUNITY: POPLAR LANE

An appeal can be made by submitting a written statement containing the grounds for the appeal and accompanied by a \$300 appeal fee. The written appeal can be delivered in person or mailed to the **Secretary of the Intermunicipal Subdivision and Development Appeal Board**.

Written submissions must be mailed or delivered to: Clerk of the Intermunicipal Subdivision and Development Appeal Board, 10 Main Street SW, Box 1030, Slave Lake, AB T0G 2A0.



To view larger versions of these maps, visit us at mdlsr.ca

Main Administration Office
3000 15 Avenue SE Slave Lake AB T0G 2A0
780.849.4888 toll-free 1.866.449.4888 info@mdlsr.ca

Sub-office
660061 Range Road 20 Flatbush AB T0G 0Z0
780.681.3929 toll-free 1.866.681.3929

