

Lesser Slave River

Upcoming Council Meetings

WEDNESDAYS, APRIL 8 AND 22, AT 10:00AM

Easter Wishes From the MD

As we hop into the Easter long weekend, please note that our MD offices will be closed.

Our MD offices will be closed on **APRIL 3 AND APRIL 6** for the Easter holiday. From Council and Administration, we wish you and your loved ones a happy, blessed, and relaxing Easter long weekend—and maybe a little extra chocolate!

Need assistance outside of regular business hours?

Call toll-free **1.866.449.4888** to connect with a live agent, who will assess your concern and engage the appropriate team to respond based on priority. For fire, police, or medical emergencies, always dial 9-1-1.

To help us manage this vital service effectively, we encourage residents to call with non-urgent questions, concerns, or complaints during regular business hours. You can also submit a **Report-a-Concern notification** at mdlsr.ca/report.

Landfill Holiday Schedule

As we celebrate the Easter weekend, the Regional Landfill will be closed on **FRIDAY, APRIL 3 AND SATURDAY, APRIL 4** in observance of the holiday weekend. Regular operating hours will resume the following week.

We appreciate your understanding and encourage residents to plan ahead for waste disposal needs before the holiday weekend. From all of us at the Lesser Slave Lake Regional Waste Management Services Commission and staff—we wish you and your loved ones a wonderful and happy Easter.

2026 Re-Gravel Program

The MD invites qualified contractors to apply for its 2026 Re-Gravel Program. Each year, this important initiative helps maintain and protect more than 250 kilometres of local roads—keeping our communities connected and our transportation routes safe and reliable.

In 2026, the MD will carry out its annual re-gravel operations from its four gravel pits located in Mitsue, Moose Portage, Chisholm, and Flatbush. Contractors with experience in gravel hauling are encouraged to submit a registration package for consideration. This is a great opportunity for local haulers to contribute to the continued upkeep of our regional road network. For more information and to complete the 2026 package, visit mdlsr.ca/tenders.

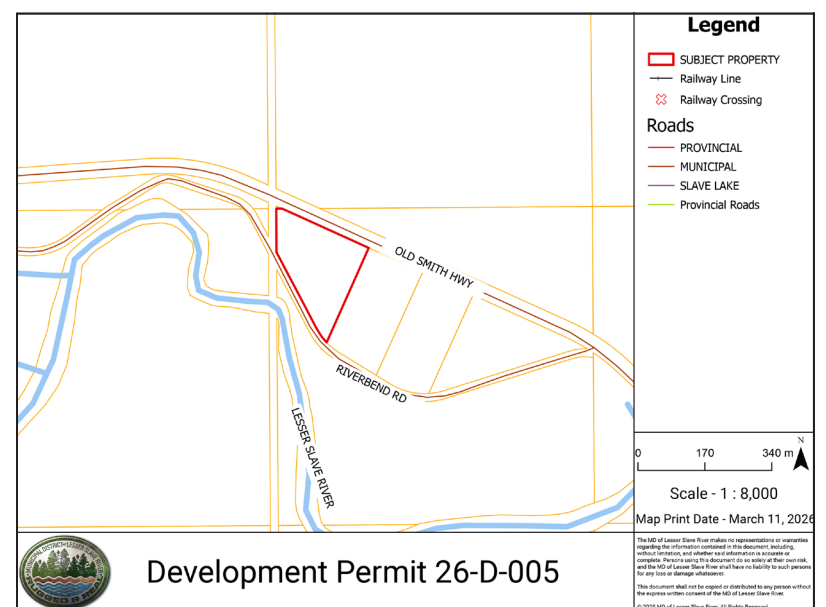
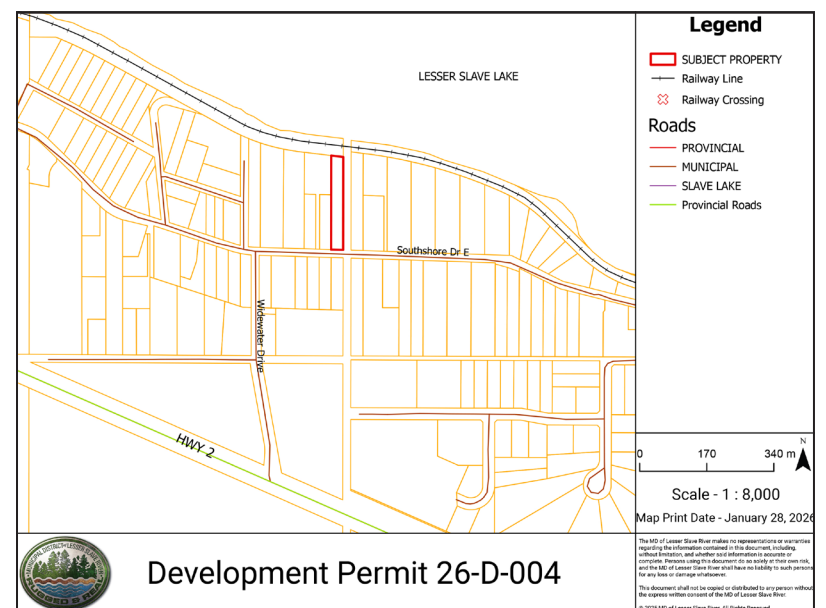
MD of Lesser Slave River Notice of Decision(s)

The following discretionary use Development Permit Application(s) have been approved by the Development Authority. Appeals must be received no later than 4:30pm on **APRIL 15, 2026**.

	DISCRETIONARY USE
26-D-004	DISCRETIONARY USE – HEAVY EQUIPMENT STORAGE, PERSONAL – ONE (1) UNIT - APPROVED 1864ET; A; 1 (74002 SOUTHSORE DR E) COMMUNITY: WIDEWATER
26-D-005	DISCRETIONARY USE – ACCESSORY BUILDING(S) TO DISCRETIONARY USES: EXISTING ACCESSORY BUILDINGS 20' X 26' AND 16' X 18' (WITH TWO CHICKEN RUNS, 20' X 8') - APPROVED 1525303; 2; 1 (14 42049 OLD SMITH HWY) COMMUNITY: OLD SMITH HWY

An appeal can be made by submitting a written statement containing the grounds for the appeal and accompanied by a \$300 appeal fee. The written appeal can be delivered in person or mailed to the **Secretary of the Intermunicipal Subdivision and Development Appeal Board**. Appeals must be received no later than 4:30pm on APRIL 15, 2026.

Written submissions must be mailed or delivered to: Clerk of the Intermunicipal Subdivision and Development Appeal Board, 10 Main Street SW, Box 1030, Slave Lake, AB T0G 2A0.



To view larger maps, please visit us online at mdlsr.ca