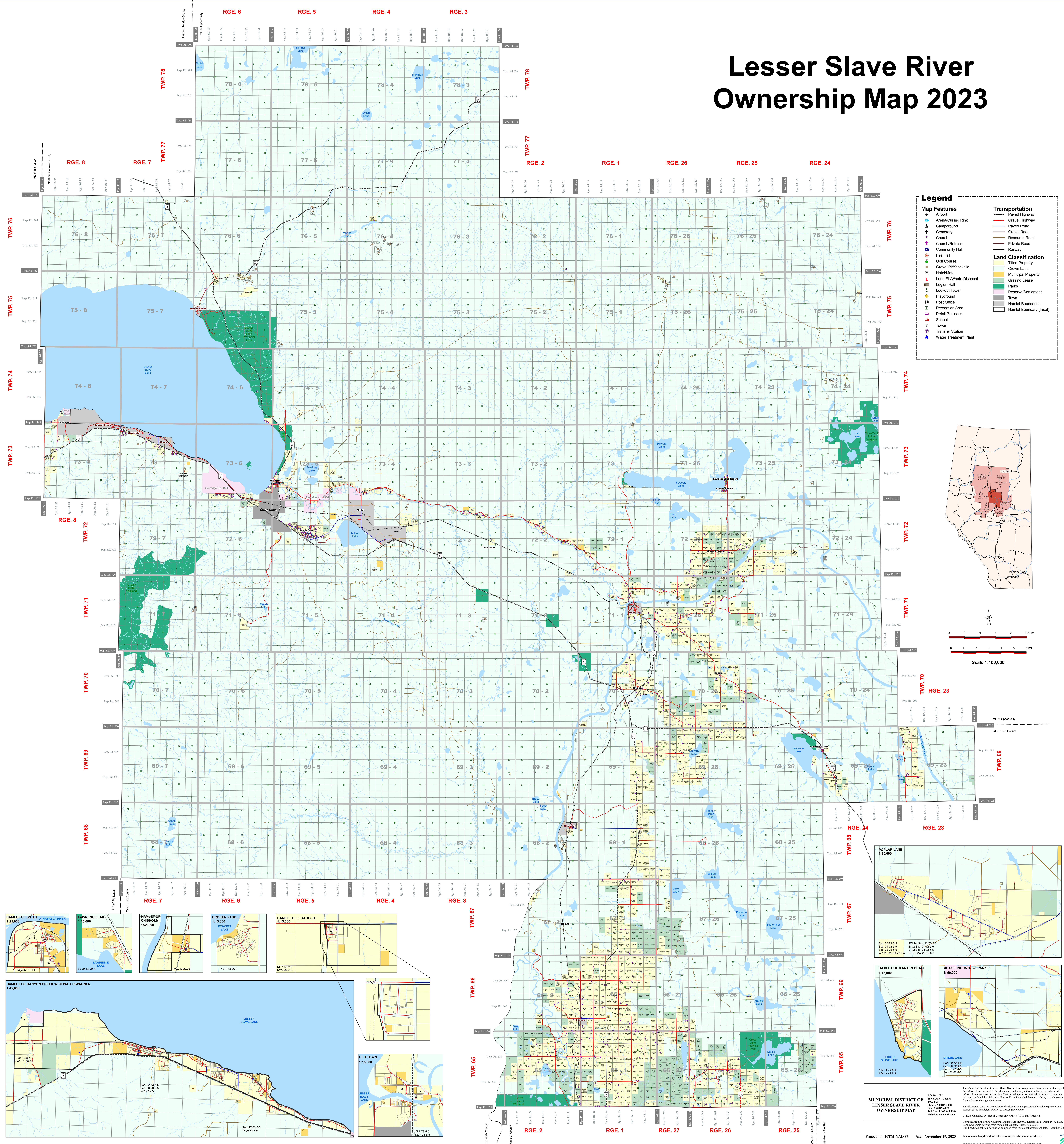
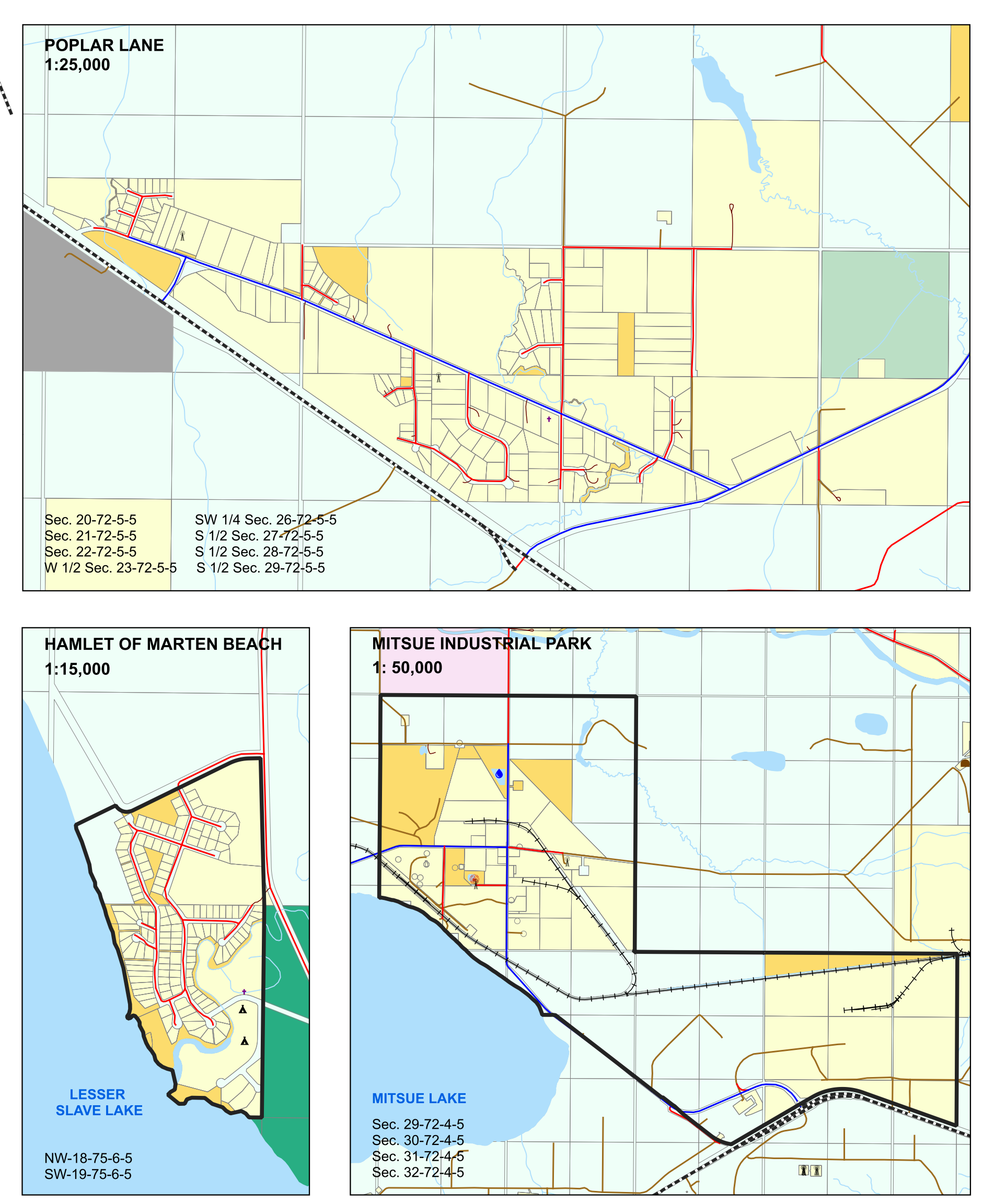
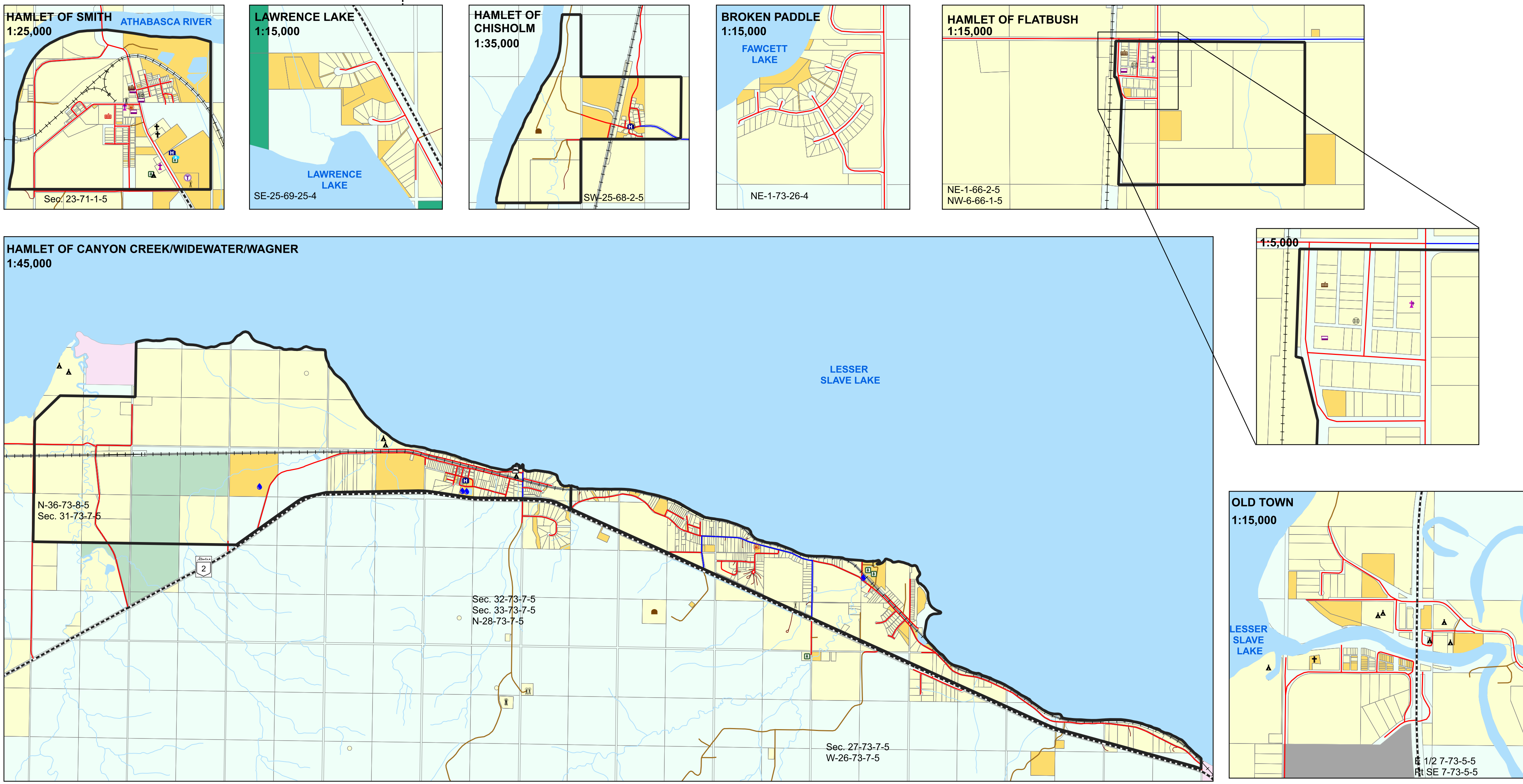
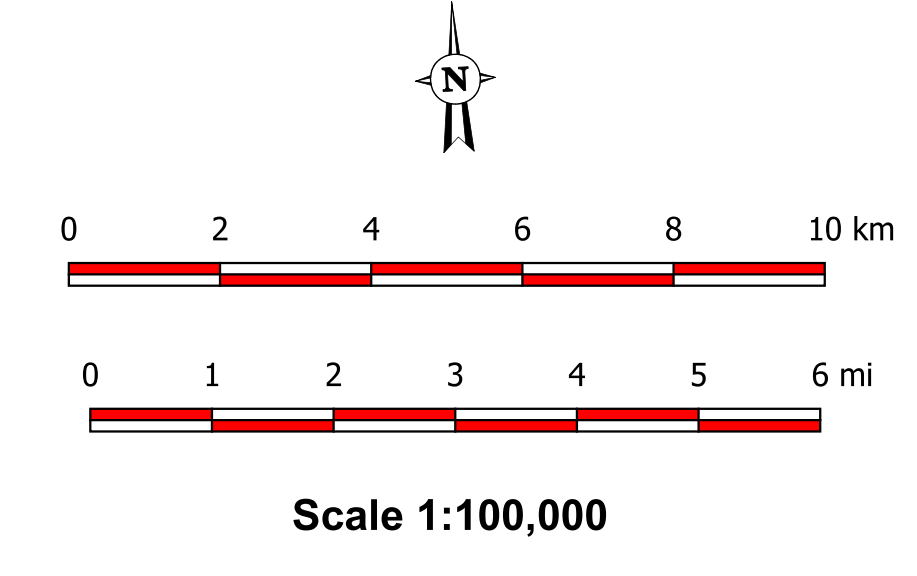
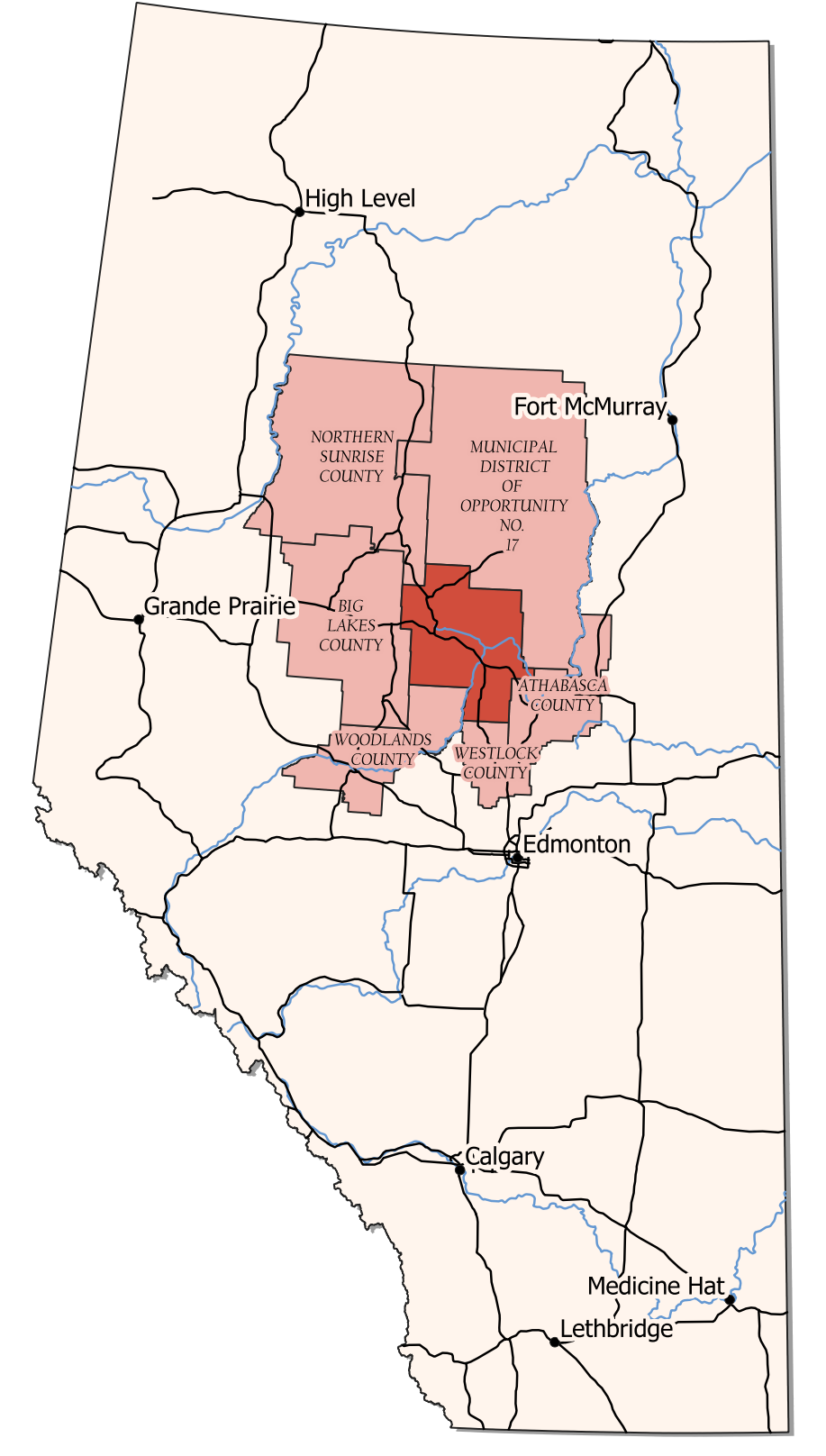


Lesser Slave River Ownership Map 2023



Legend	
Map Features	Transportation
Airport	Paved Highway
Animal/Curing Rink	Gravel Highway
Campground	Paved Road
Cemetery	Gravel Road
Church/Retreat	Resource Road
Community Hall	Private Road
Fire Hall	Railway
Golf Course	
Hotel/Motel	
Land Fill/Waste Disposal	
Legion Hall	
Lookout Tower	
Playground	
Post Office	
Recreation Area	
Retail Business	
School	
Tower	
Transfer Station	
Water Treatment Plant	
	Land Classification
	Titled Property
	Crown Land
	Municipal Property
	Gravel Lease
	Parks
	Reserve/Settlement
	Town
	Hamlet Boundaries
	Hamlet Boundary (inset)



**MUNICIPAL DISTRICT OF
LESSER SLAVE RIVER
OWNERSHIP MAP**

PO Box 322
Lesser Slave River
NT X1A 1A4
Phone: 780.449.4889
Fax: 780.449.4979
Mail Stop: 1.800.449.4888
Website: www.lsr.ca

This document shall not be copied or distributed in any form without the express written consent of the Municipal District of Lesser Slave River.

Copyright © 2023 Municipal District of Lesser Slave River. All Rights Reserved.

Compiled from the Rural Catalogue Digital Base 1:20,000 Digital Base, October 18, 2023.
Land ownership derived from the Land Use File, October 20, 2023.
Building/Feature information compiled from municipal assessment data, December 2022.

Projection: 10TM NAD 83 Date: November 29, 2023

Due to space length and parcel size, some parcels cannot be labeled.

NOT RESPONSIBLE FOR ERRORS OR OMISSIONS